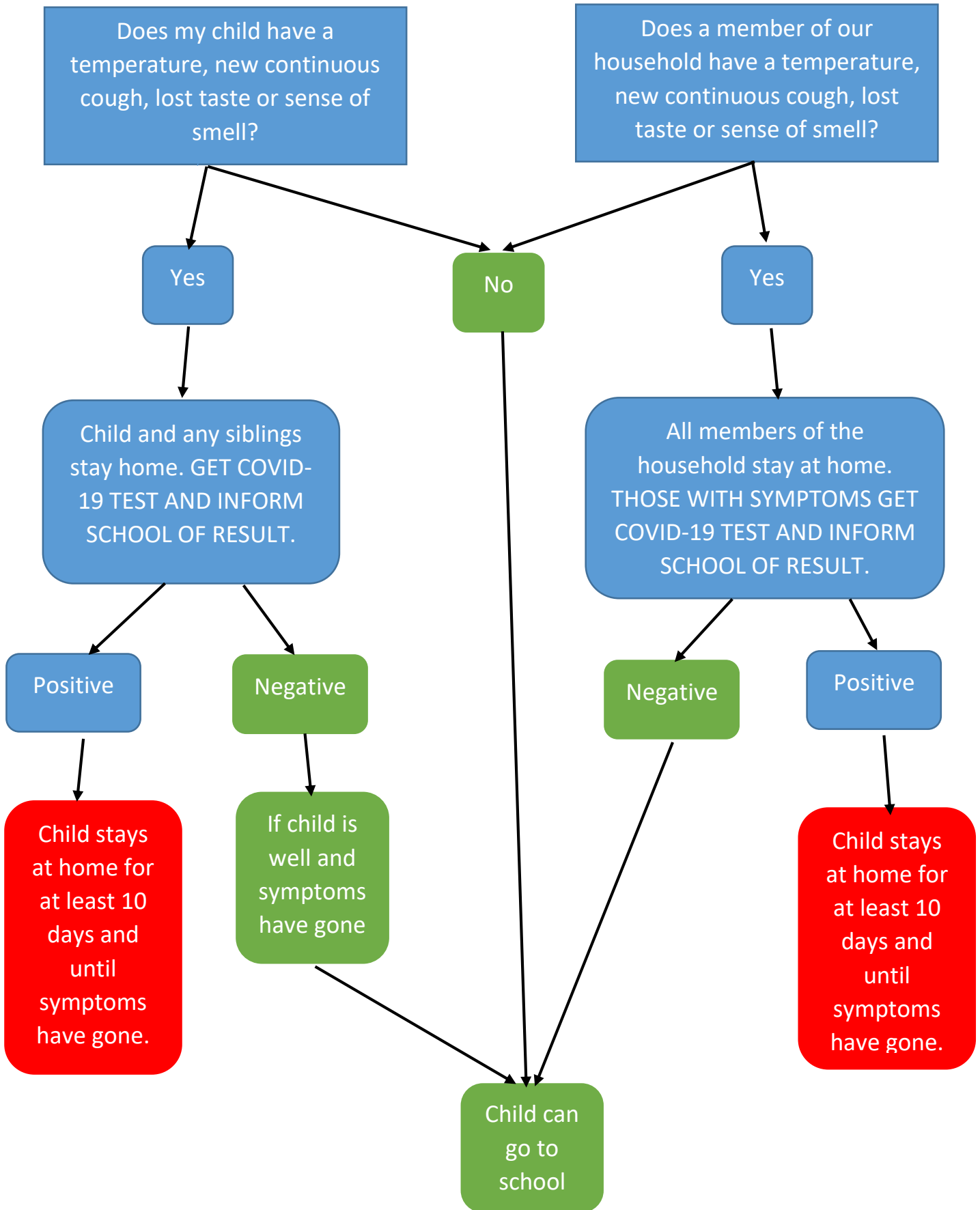


ACTIONS IF COVID-19 SYMPTOMS DISPLAYED AT HOME



Note: If you are contacted by NHS Test and Trace and your child was with you during the contact with the person who has contracted Covid-19, both you and your child must self-isolate for 14 days, even if you receive negative tests.

ACTIONS IF COVID-19 SYMPTOMS DISPLAYED AT SCHOOL

